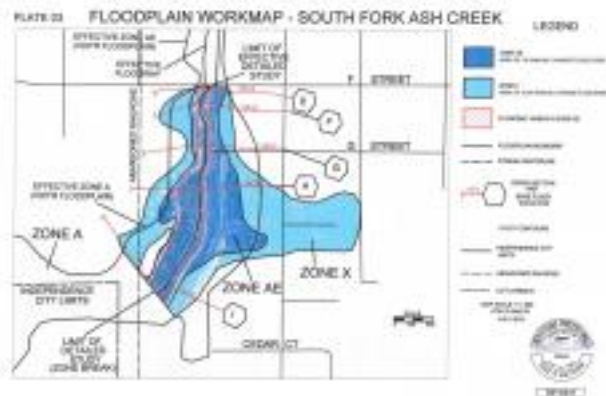






South Fork Ash Creek Floodplain Revision



The Ash Creek Water Control District and the City of Independence partnered to review the floodplain map for the South Fork of Ash Creek upstream of F Street (Mountain Fir Park area). This map revision has been accepted by FEMA and shows that a number of homes that were previously in the floodplain actually lie outside the floodplain. Homes located outside of the FEMA designated floodplain do not require flood insurance, although it can still be purchased for the property at an affordable rate. The new Flood Insurance Rate Map for this area is attached below along with the authorizing letter from FEMA. If you have questions, please contact Shawn Irvine [sirvine \[at\] ci \[dot\] independence \[dot\] or \[dot\] us](mailto:sirvine@ci.independence.or.us) 503-837-1191

Supporting Documents

-  [Letter of Map Revision Determination](#)
-  [New Flood Insurance Rate Map](#)
-  [New Flood Profiles](#)
-  [2008 FEMA Floodplain Map](#)

Source URL (retrieved on 2015-01-28 01:08):

<http://www.ci.independence.or.us/cityrecorder/south-fork-ash-creek-floodplain-revision>