



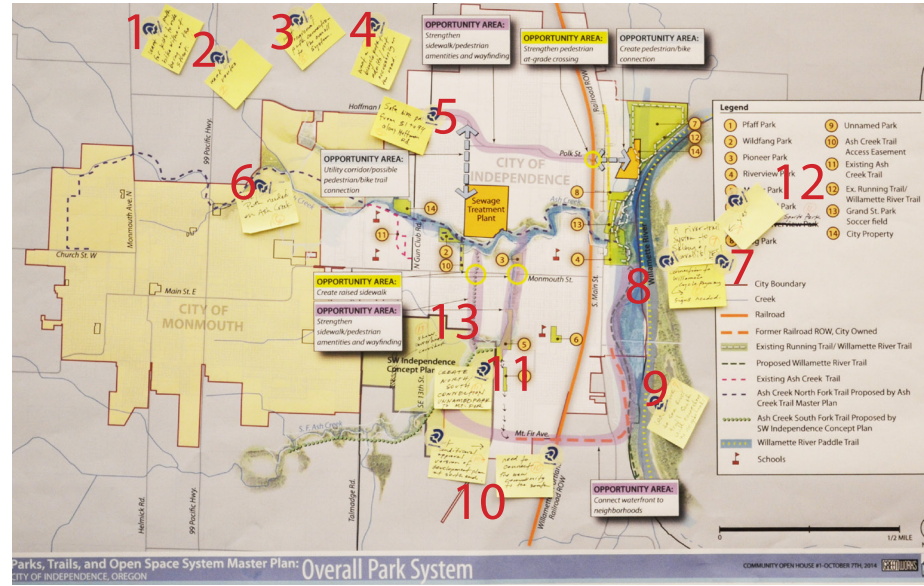
INDEPENDENCE PARKS & OPEN SPACE MASTER PLAN

APPENDIX

APPENDIX A: INDIVIDUAL COMMENT BOARDS FROM OPEN HOUSE #1

Comment boards have been provided to show individual responses from Section IV

Overall Park System



OVERALL PARK SYSTEM

BICYCLE FACILITIES:

1. Want bike path for kids to ride bike without being on the street.
2. Want bike routes.
3. Want to see a regional path connection to the system.
4. Want a bicycle path for adults/not necessarily on the road.
5. Safe bike path from 51 to 94 along Hoffman Road.
6. Bike/walk path needed on Ash Creek.

WILLAMETTE RIVER:

7. A river trail system to Salem & Corvallis! (2 additional Yes! notes).
8. Connection to Willamette cycle byway*, signs needed (*Spelling unclear).
9. Would love to see river trail south with connections to neighborhood.

OVERALL:

10. Need to connect the new community to the south (Note added: Get conditional approval version of development plan at south end).
11. Create North/South connection, Un-named Park to Mt. Fir.

NOTES ON BOARD:

12. Legend #7-North Riverview Park renamed to Independence Sports Park
13. Show power-lines corridor.

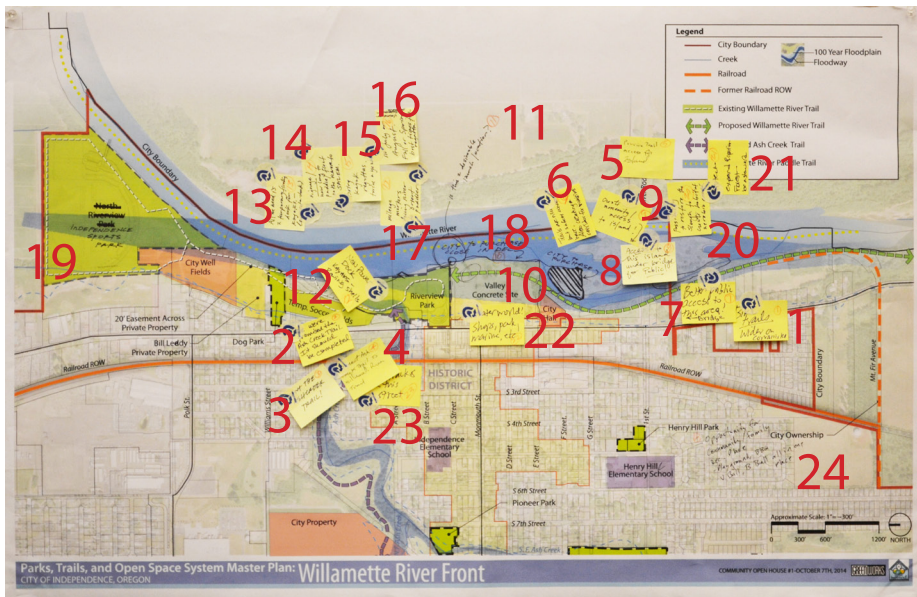
DOG PARK

1. Love the trails!
2. Full of ivy and other invasives. Be a steward of your current spaces.

Dog Park



Willamette River Front



WILLAMETTE RIVER FRONT

TRAILS INTEREST:

1. Bike trails-wider on Corvallis Road.
2. We were promised the Ash Creek Trail. It should be completed.
3. Want the Ash Creek Trail!.
4. Connect Ash Trail to Willamette River trail.
5. Provide trail access to island.
6. Trails are nice but safety concern here. Also creating a corridor for invasives.

ACCESS TO ISLAND:

7. Better public access to this area!-Bridge with arrow in North direction.
8. Access to this island under bridge for public!
9. Create amenity/access to island.

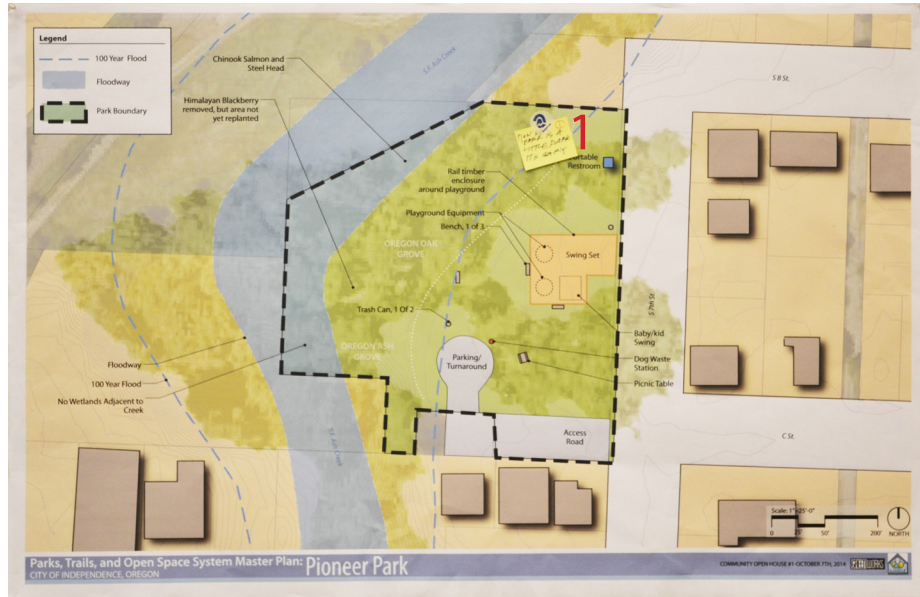
KAYAKS AND RIVER ACTIVITIES:

10. City close to purchase (Island has shaded area).
11. Question- Is this a desirable launch location?
12. Non power dock, Kayaks, Rowing shells.
13. All we need is 2 temporary floating dock[s] for Kayaks (connection-dock).
14. Signage/how long to paddle/float on the river to Salem.
15. Bring kayak regattas twice a year.
16. No July or August. Fall or Spring best times of year for regatta. June or summer solstice.
17. Mileage markers facing river to orient paddlers.

NOTES ON BOARD:

18. City close to purchase in December (Note placed on east side of Valley Concrete Side).
19. North Riverview Park-renamed to Independence Sports Park.
20. Possibly restore the slough to create habitat aerobic enviro.
21. Protect-expand riparian forest, be a steward.
22. Waterworld! Shops, park, marina, etc.
23. Fix tracks on this street.
24. Henry Hill Elementary School-Opportunity for community/family, recreation place-playground, BBQ, V-Ball, B-Ball, all in one place.

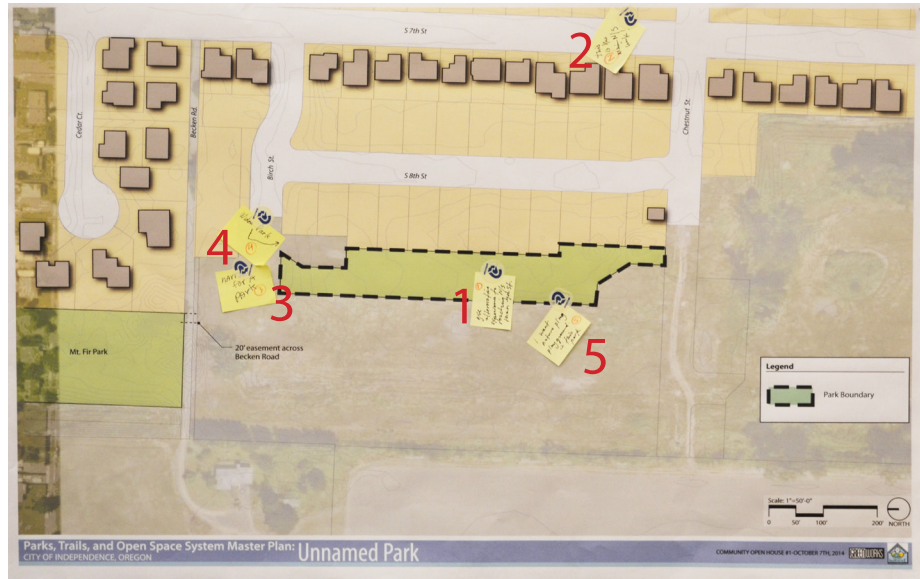
Pioneer Park



PIONEER PARK

1. Pioneer park is a little dark, its scary.

Unnamed Park



UNNAMED PARK:

PARK CONNECTIONS:

1. Give alternative experience to reaching N/S than 7th St.
2. This is the main N/S link!

PARK SIZE:

3. Narrow for a park.
4. Widen park.

PARK AMENITIES:

5. I want nature play playground in this park.

Riverview Park



RIVERVIEW PARK

WILLAMETTE RIVER:

1. Not ideal landing area in summer.
2. Riverside walking route.
3. It would be nice to move parking to improve view of river.
4. Want a nice view of the river and experience of river.
5. More beach access.
6. Ideal launch area.
7. Move parking away from riverside.
8. Yes! Move parking.
9. Vehicle access important for paddle boat loading and users with mobility issues.
10. Keep, protect and expand Willamette River riparian vegetation.

PARK AMENITIES:

11. Concerned about building high quality fields in the fluid plain.
12. Concerned about adding maintenance for more fields. Keep up what we have first!
13. I want nature playground.
14. Jungle gym and spinning bars (Drew, age 12).
15. Merry-go-round (Drew, age 12).
16. Upset that the zipline at playground is stuck.
17. Balance beam!
18. There's no options for older or bigger kids.
19. Safe places to swim.
20. Want a water feature, splash area especially when river is too dangerous (Yes! added to this comment).
21. Perhaps a splash pond at a different park instead.
22. Maybe multiple splash areas.
23. This footbridge is new and is underwater most years and collects debris. This should not have been designed with these issues.

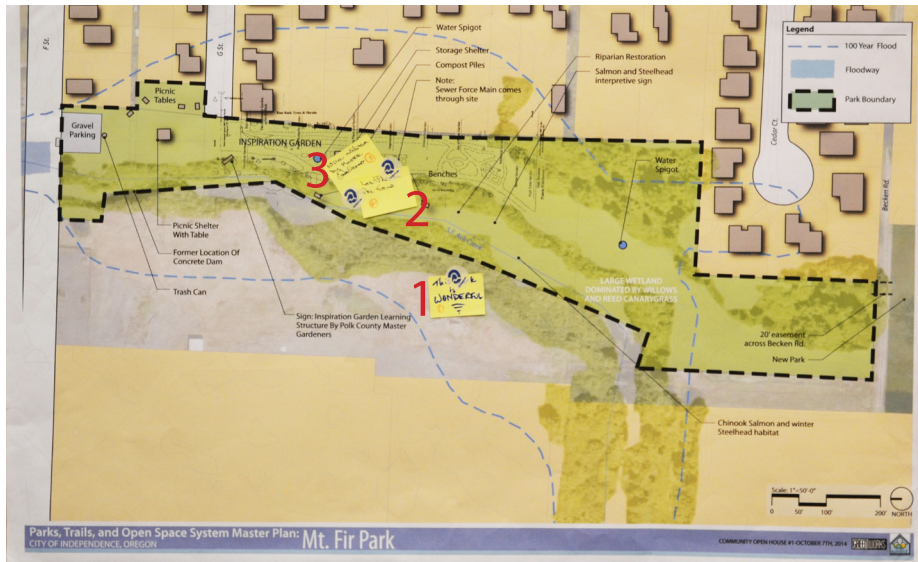
OVERALL:

24. Valley concrete site is full of knotweed and very dangerous to concrete-need to eradicate.
25. Walk/path and access to island.
26. Biking/swimming are important to me.
27. Chain type of food options, Red Robin, Cold Stone Creamery.
28. College built boathouse. College rowing club? Locate boathouse.

NOTES ON BOARD:

29. Shower and camp host.

Mt. Fir Park



MT. FIR PARK:

OVERALL:

1. This park is wonderful.
2. Let this be the focus.
3. Nice addition by Master Gardeners.

Henry Hill Park



HENRY HILL PARK:

PARK AMENITIES:

1. Need water fountain.

POOL PROGRAM:

2. Want movie night at the pool in summer.
3. Why isn't there a new facility-like WV.
4. Maintain high quality pool-important for water safety.

Pfaff Park



PFAFF PARK:

OVERALL:

1. Permanent Restroom Facility
2. This park is well used and is visible, and has Porta-Potties.
3. Pickleball court desired, a couple, and fenced.

Wildfang Park



WILDFANG PARK:

OVERALL:

1. Keep natural watershed enhancement project up?
2. Full of invasive bullfrogs.
3. Want Ash Creek trail.
4. Creek trail threatens health of Ash Creek stream-side area.

Where Do You Want To Go? - Local

Where do **you** want to go?
How would **you** like to get there?

Legend

1) Platt Park	9) Unnamed Park
2) Wolfing Park	10) Ash Creek Trail
3) Pioneer Park	11) Access Eastment
4) Riverview Park	12) Existing Ash Creek Trail
5) Mt. Fir Park	13) Ex. Running Trail/
6) Henry Hill Park	14) Willamette Silver Trail
7) North Riverview Park	15) Grand St. Park
8) Dog Park	16) Soccer field
	17) City Property

Parks, Trails, and Open Space System Master Plan: Wayfinding
FESTIVAL NEWS: CITY OF INDEPENDENCE, OREGON

WHERE DO YOU WANT TO GO? HOW WOULD YOU LIKE TO GET THERE?

POSTED NOTES:

1. Ash Creek trail needed!
2. One needed (refer to green dot on plan).

WRITTEN COMMENTS:

3. We should complete Ash Creek trail.
4. Lots of areas for public art-look at McMinnville
5. Do not complete the Ash Creek Trail-expensive, not safe, secluded, high cost, focus on completing connection on the existing street system (See note on previous board).
6. Yes! We need a trail on Ash Creek for everyone!
7. Visitor "passport"

DOTS ON BOARD:

8. Two (2) placed on Henry Hill Park.
9. One (1) placed next to note #2.

WHAT STORIES ABOUT INDEPENDENCE ARE IMPORTANT TO TELL?

What Stories About Independence Are Important To Tell?

What **stories** about Independence are important to tell?

HOPS AND AGRICULTURAL HERITAGE

Are there other stories you would like told? Please share your stories with us.

History of the railroad

Hispanic contribution to the area

Importance of wetland/wildlife/greenspace

Hop pickers & growers coming to town

1-4

HISTORIC FERRY CROSSING

Ferry Captain stories...

Indep. bridge

Boat travel years, Ore. trail times

R.R. history - what/where/who

10

KALAPUYA

We would like to know

9

5-8

Parks, Trails, and Open Space System Master Plan: Cultural
FESTIVAL NEWS: CITY OF INDEPENDENCE, OREGON

HOPS AND AGRICULTURAL HERITAGE:

1. History of the railroad.
2. Hispanic contribution/history in the area.
3. Importance of wetland/wildlife/greenspace.
4. Hop pickers and growers coming to town.

HISTORIC FERRY CROSSING:

5. Ferry Captain stories...
6. Independence bridge.
7. Boat travel years, Ore. trail times.
8. R.R. history-what/where/who.

KALAPUYA:

9. Yes, I would like to now (Note added to comment-Yes)

NOTE ADDED TO BOARD:

10. Willamette Waterway Trail-interpretive signs on the river.

Actividades Recreas

En su opinión, ¿cuáles deberían ser las prioridades de este Plan Maestro? Por favor, coloque un punto al lado de las **tres** actividades que usted cree son las más importantes de las imágenes a continuación.

Otros, sírvase describir más abajo.

Plan Maestro del Sistema de los parques, pistas, y espacios abiertos: Actividades Recreas
FESTIVAL INFORMATIVO, CIUDAD DE INDEPENDENCE, OREGÓN

EN SU OPINIÓN, ¿CUÁLES DEBERÍAN SER LAS PRIORIDADES DE ESTE PLAN MAESTRO? POR FAVOR, COLOQUE UN PUNTO AL LADO DE LAS TRES ACTIVIDADES QUE USTED CREE SON LAS MÁS IMPORTANTES DE LAS IMÁGENES A CONTINUACIÓN.

(In your opinion, what should the priorities be for this Master Plan? Please place a dot next to the three activities you think are most important from the images below.)

DOTS ON BOARD:

1. One (1) placed on Rio de Acceso. (River Access)
2. One (1) placed on Areas de Reunion. (Gathering Areas)

Deportes

De las opciones, que dos tipos de campos o instalaciones deportivas son las más importantes para los residentes de Independence? Por favor, coloque un punto al lado de las **dos** actividades deportivas que cree que son más importantes.

Otros, sírvase describir más abajo.

Plan Maestro del Sistema de los parques, pistas, y espacios abiertos: Deportes
FESTIVAL INFORMATIVO, CIUDAD DE INDEPENDENCE, OREGÓN

DE LAS OPCIONES, QUE DOS TIPOS DE CAMPOS O INSTALACIONES DEPORTIVAS SON LAS MÁS IMPORTANTES PARA LOS RESIDENTES DE INDEPENDENCE? POR FAVOR, COLOQUE UN PUNTO AL LADO DE LAS DOS ACTIVIDADES DEPORTIVAS QUE CREE QUE SON MÁS IMPORTANTES.

(Out of the following, which two types of sports fields or facilities are most important for the residents of Independence? Please place a dot next to the two sports activities you think are most important.)

DOTS ON BOARD:

1. One (1) placed on Fútbol. (Soccer)
2. One (1) placed on Golf del Disco. (Disc Golf)

APPENDIX B: INDIVIDUAL COMMENT BOARDS FROM OPEN HOUSE #2

Comment boards have been provided to show individual responses from Section IV

Overall Approach

1 Please tell us if you **support** this overall approach to meeting the City's park and recreation needs over the long term by placing a green or red dot in the box below. If you have any additional comments, please write them on this display or place them on the maps using post-it notes.

ALL EXISTING PARKS (MINI-NEIGHBORHOOD AND NEIGHBORHOOD)

Legend

- 1 Pfaff Park
- 2 Wildfang Park
- 3 Pioneer Park
- 4 Riverview Park
- 5 Mt. Fir Park
- 6 Henry Hill Park
- 7 Independence Sports Park
- 8 Dog Park
- 9 Unnamed Park
- 10 Grand St. Park Soccer Field
- 11 City Property
- 12 Ash Creek Trail Access Easement
- 13 Sewage Treatment Plant

Park Level of Service Legend

- Orange circle: Represents a 1/4 mile walking distance from a Mini-Neighborhood Park.
- Green circle: Represents a 1/2 mile walking distance from a Neighborhood Park.
- Pink shaded area: Areas not currently served by Mini-Neighborhood or Neighborhood Park proximity guidelines for level of service.
- Blue hatched area: Represents a 1/2 mile walking distance from the school sites. Current school sites provide recreation and park amenities after school during the week, weekends, and summer.

Note: Classification and location according to Parks and Open Space Master Plan (1998).

PROPOSED NEIGHBORHOOD PARKS

Legend

- 1 Pfaff Park
- 2 Wildfang Park
- 3 Pioneer Park
- 4 Riverview Park
- 5 Mt. Fir Park
- 6 Henry Hill Park
- 7 Independence Sports Park
- 8 Dog Park
- 9 Unnamed Park
- 10 Grand St. Park Soccer Field
- 11 City Property
- 12 Ash Creek Trail Access Easement
- 13 Sewage Treatment Plant

Park Level of Service Legend

- Orange circle: Represents a 1/4 mile walking distance from areas served by parks.
- Green circle: Represents a 1/2 mile walking distance from areas served by parks.
- Pink shaded area: Areas not currently served by Mini-Neighborhood or Neighborhood Park proximity guidelines for level of service.
- Blue hatched area: Represents a 1/2 mile walking distance from the school sites. Current school sites provide recreation and park amenities after school during the week, weekends, and summer.

Yes, I support this approach (add a green dot)	No, I do not think this a good plan (add a red dot)
	<p><i>Focus on NEIGHBORHOOD PARKS River front is development.</i></p>

Yes, I support this approach (add a green dot)	No, I do not think this a good plan (add a red dot)
<p><i>Support Neighborhood PARKS</i></p>	

OVERALL APPROACH-BOARD 1

NOTES ON BOARD:

1. Focus on Neighborhood parks, Riverfront is development.
2. Support neighborhood parks.

ALL EXISTING PARKS:

3. 5 Green dots placed in box-'Yes, I support this approach'.
4. 1 Red dot placed in box-'No, I do not think this is a good plan'.

PROPOSED NEIGHBORHOOD PARKS:

5. 7 dots placed in box-'Yes, I support this approach'.
6. 2 dots placed in box-'No, I do not think this is a good plan'.

Waterfront conceptual overall siteplan - Option 1



WATERFRONT CONCEPTUAL OVERALL SITEPLAN - OPTION 1

NOTES ON BOARD:

1. Heavy traffic for residential street.
2. Now this is filled with apartments.
3. East landing Road, tie into Historic Marker on river.
4. Former boat landing, old pylons and Historic marker?
5. Peter S., local architect-I think the mountain bike pump track makes more sense here, as its cloer to residential and parks, and away from industrail.
6. Skills park
7. Skills Park-Chriss Eggen, chrisseggan@vealbikesplus.com, 503.837.1837, noted added: not a fan.
8. No bike skills station. Madrona park in Mnmouth is better location.
9. Peter S., local architect-This boardwalk makes a lot of sense. Brings users out to the water in a very dynamic manner. Hazard?
10. Limited drinking fountains in town and more.
11. Green dot (no description provided).
12. I love this idea of this launch area for kayacking and tubing!

Waterfront conceptual overall siteplan - Option 2



WATERFRONT CONCEPTUAL OVERALL SITEPLAN – OPTION 2

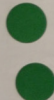


NOTES ON BOARD:

1. In 1996 Wallace Wanive park was “flattened” by the flowing waters, the same thing will in evitably happen to these ball fields and the city has no clue (?) the \$\$ money to maintain these fields.
2. Issue with flooding and maintainance.
3. Are these really going to be type fields?Some of us prefer softball,
4. Support a community garden with orchards and berries.
5. All for a community garden.
6. And community garden.
7. Peter S., local architect-The strong promenade of trees at edge of the garden is a good idea and reinforces spatial clarity.
8. Let’s check the need for 50’ radius on wells.
9. Focus on neighborhood parks.

10. Peter S., local architect-I like the widening and curving of the overflow parking area.
11. I like it.
12. Peter S., local architect-I like the classic alignment and spatial arrangement that frames the view.
13. Green dot placed on top of River Steps.
14. Make this larger; more like photos on display board.
15. Green dot placed next to area titled-Overflow Parking Area.
16. No Ash Creek Trail!
17. No Ash Creek Trail.
18. Lots of ideas what can Indep. (Independence) really afford and maintain?
19. Water park @ Valley Concrete site rather that houses! Hotel guests could use also.

Improve existing parks and create new parks

In general, do you think it is more important to improve existing parks or create new parks in areas not currently well-served by nearby park facilities? Please use a dot to note your priority in the table below.

It is more important to improve existing parks	It is more important to create new parks	The objectives are equally important
 <p>1 2</p>	 <p>1/2 mile criteria is very close - consider 3/4-1 mile access to parks instead</p> <p>KEEP NEW PARKS FOR UNDER SERVED AREAS + not for hidden areas along Ash Creek</p>	

GENERAL PRIORITIZATION QUESTION

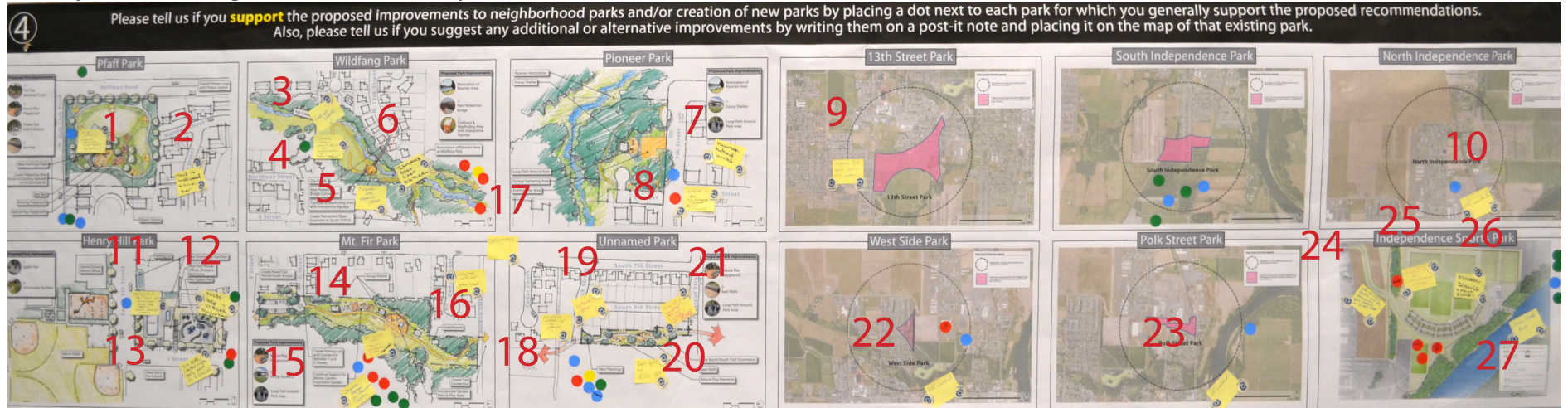
DOT TOTALS FOR EACH CATEGORY:

- More important for existing parks- 2 dots
- More important to create new parks- 1 dot
- Both objectives are equally important- 7 dots

NOTES ON BOARD:

- 1/2 mile criteria is very close- consider 3/4- 1 mile access to parks instead.
- Keep new parks for under served areas and not for hidden areas along Ash Creek.

Park improvements and general location for new parks



PROPOSED PARK IMPROVEMENTS AND NEW PARK LOCATIONS

NOTES ON BOARD:

1. Nice park! Needs better irrigation system.
2. This is well need and nice now!
3. Lots of crime.
4. Develop this park but no connection to Ash Creek trail.
5. Extended EMS response times.
6. Isolated best left natural.
7. Maintain natural areas.
8. Needs to be upgraded- weeds, better lighting.
9. Madrona Park could serve this area.
10. Not needed.
11. This park has had no attraction since the 1980's...needs lots of work.
12. Needs help and by a large neighborhood.
13. Is a side, limited area really good for a splash pad.
14. I like the master gardener garden. (add note-Me too!)
15. Improve signage for inspiration garden.
16. Volleyball court/net- grass/sand.
17. Bathrooms??
18. In dire need of a park.
19. Need bathrooms please!

20. Great spot for public art.
21. Make play equipment little kid friendly- not just swings and monkey bars.
22. Not needed.
23. Not needed.
24. Way too much traffic for residential development, 300+ vehicles on 2 lane road?
25. Agree flooding and maintenance issues!
26. Flooding issues and maintenance issues.
27. Tree lined road.

DOT TOTALS FOR SUPPORTING EACH PROPOSED PARK IMPROVEMENT AND NEW PARK LOCATION:

- A. Pfaff Park- 5 dots
- B. Wildfang- 4 dots
- C. Pioneer Park- 1 dot
- D. Henry Hill Park- 4 dots
- E. Mt. Fir Park- 7 dots
- F. Unnamed Park- 6 dots
- G. 13th Street Park- 0 dots
- H. South Independence Park- 5 dots
- I. North Independence Park- 1 dot
- J. West Side Park- 1 dot, 1 dot with written comment-NO
- K. Polk Street 1 dot
- L. 5 dots, @ dots with written comment-NO, 1 dot with written comment-Skills Park.

Wayfinding recommendations

5 Please tell us if you generally support the “wayfinding” recommendations illustrated on these boards by placing a green dot or a red dot in the box below. If you have any other suggestions for locations for wayfinding signs or other facilities, please note them on the maps using post-it notes.

Legend:

- Trail Park
- Walking Park
- Pioneer Park
- Monmouth Park
- Mt. Fir Park
- Henry Hill Park
- Independence Square Park
- City Building
- Historical Park
- Public Recreation
- Senior Recreation
- Community Center
- Public Storage
- Public Office
- Public Library
- Public Parking
- Public Transit
- Public Utility
- Public Water
- Public Sewer
- Public Gas
- Public Electric
- Public Telephone
- Public Cable
- Public Internet
- Public Security
- Public Fire
- Public Police
- Public Health
- Public Social
- Public Cultural
- Public Religious
- Public Educational
- Public Medical
- Public Veterinary
- Public Agricultural
- Public Industrial
- Public Commercial
- Public Residential
- Public Institutional
- Public Government
- Public Non-Profit
- Public For-Profit
- Public Other

Survey Results:

Yes, I support this approach (add a green dot)	No, I do not think this a good plan (add a red dot)
●●●●●●●●	●●
Yes, I support this approach (add a green dot)	No, I do not think this a good plan (add a red dot)
●●●●	13

Precedent Images:

- A. Downtown
- B. Pedestrian Signage
- C. Artistic Signage
- D. Trailhead Map
- E. Informational Signage
- F. Artistic Signage
- G. Informational Signage
- H. Informational Signage
- I. Informational Signage
- J. Directional Signage
- K. Directional Signage

Comments:

14 Independence Historical image (Green dot placed next to this statement-“ditto”).
14. Make it simple.

WAYFINDING RECOMMENDATIONS

NOTES ON BOARD:

- Support (?) along main highway.
- & 3. New Pedestrian Bridge or Railroad Crossing with Additional Trail, location redrawn on map to a different location.
- Green dot placed on map drawing.
- Easement exists to railroad.
- Is this feasible?
- #12, I do not support Ash Creek trail easement.
- Do not support pedestrian paths following Ash Creek. Not safe and expensive.
- Directional on Monmouth St.
- Add sign to existing pole for Mt. Fir Park (Pioneer Park sign).
- #12, I do not support Ash Creek trail easement.
- Add “i” signs to main roads- pull visitors/residents to parks.
- Less art on the actual map would be important- and legibility is key. Less need for “decoration” in wayfinding is a good idea- function first. Keeping the height of the center of the map signing is better at eye level and not too high or too low. Knowing where parks are w/ street sign direction is very helpful. I can never find parks! Clear, legible signs are good but would like some theme that reflects

Independence Historical image (Green dot placed next to this statement-“ditto”).
14. Make it simple.

DOT TOTALS: YES I SUPPORT THIS APPROACH

Pedestrian Routes- 8 dots
Wayfinding and Interpretive Signage- 4 dots

DOT TOTALS: WAYFINDING IMAGES:

- A. 1 red dot, 1 green dot
- B. 2 green dots
- C. 1 red dot
- D. 1 green dot
- E. 1 red dot
- F. 2 red dots
- G. 2 red dots
- H. 1 green dot
- I. 1 green dot
- J. 1 green dot
- K. 3 green dots, 1 red dot

Funding opportunities

6 If you have any comments on this topic, please note them on this board using post-it notes.

Proposed funding costs for New Parks, Trails, and Improvements to Existing Parks

Existing Parks	Existing Assets	Value
1000 Park	5.49	\$747,487
Washington Street Park	6.00	\$2,277,800
Pioneer Park	3.95	\$386,931
Washington Park	3.92	\$432,418
Washington Park	18.93	\$1,481,227
1000 Park	7.23	\$1,008,874
Washington Street Park	6.03	\$4,963,132
Washington Street Park	77.03	\$3,742,326
1000 Park	2.14	\$491,984
Washington Street	4.00	\$1,347,800
Subtotal		\$15,467,565
Proposed Parks	Assets	Value
1000 Independence Park	0.0-0.75	\$455,014
1000 Independence Park	2.0	\$792,893
1000 Park	2.0	\$1,163,915
1000 Park	3.4	\$2,222,884
1000 Park	1.0	\$4,830,000
Subtotal		\$10,764,706
Proposed Parks	Assets	Value
1000 Park	0.0-0.75	\$455,014
1000 Independence Park	2.0	\$792,893
1000 Park	2.0	\$1,163,915
1000 Park	3.4	\$2,222,884
1000 Park	1.0	\$4,830,000
Subtotal		\$10,764,706

The City should remain flexible so that it can take advantage of new funding opportunities as circumstances change in the future. Any strategy to fund capital projects and services will depend on economic conditions at that time. Since this is a 20-year Plan, the City may want to consider both short-term and long-term strategies to obtain park funding. As economic circumstances change, new sources of funding may become available.

Grants: Possible grant sources

- Public Grants Land and Water Conservation Trust Fund Grant
- Oregon State Marine Land Urban Park and Recreation Recovery Program
- Oregon Youth Conservation Corps
- American Greenway Grant

System Development Charges

An SDG is a one-time charge imposed on new development to equitably recover the cost of capacity needed to serve new customers. Charges may be used only for capital improvements.

Parks Levy

Property tax is the tax liability imposed on homeowners for owning real estate. The City enforces property taxes on residents, using the revenue to fund park programs and parks for the entire community.

Private Foundations: Possible Foundation sources

- Clark Foundation
- Collins Foundation
- Anne A. Berni Foundation
- Ford Family Foundation
- First Interstate Bank of Oregon
- Charitable Foundation
- Oregon Community Foundation

Parks Bond

Municipal bonds are securities that are issued for the purpose of financing the infrastructure needs of the issuing municipality.

Partnerships & Volunteer Contributions

The City of Independence has several successful park projects implemented by the good will and volunteer hours of its residents such as the Dog Park and the playground at Platt Park. Continued support and volunteer efforts from the community is an integral and valuable part of the Independence Parks system.

FUNDING OPPORTUNITIES

NOTES ON BOARD:

1. Ash Creek trail important connection.
2. Trail proposed not needed, expensive and hard to maintain and not safe.
3. 2 green dots placed next to System Development Charges explanation.
4. Pioneer park needs more money.
5. United Way grants. \$ for development and for maintenance as well.
6. 1 green dot placed next to Partnerships & Volunteer Contributions.

Aquatic center

An Aquatic Center is feasible as a goal for a Parks District, which would partner the City of Independence, City of Monmouth and the Central School District. Would support a Parks District? ●●●●●●●●

Do you want to see an Aquatic Center in the City of Independence/City of Monmouth community? ●●●●●●●●

Parks, Trails, and Open Space System Master Plan: CITY OF INDEPENDENCE, OREGON

Aquatic Center-Precedent

SUPPORT FOR AN AQUATIC CENTER

NOTES ON BOARD:

1. Aquatic Center not needed...Dallas has unused capacity.
2. Oh ya! Husband.
3. Absolutely!
4. Splash pad, yes.
5. Yes
6. Yes!

DOT TOTALS:

In support of aquatic center: 5 green dots
 Not in support of aquatic center of aquatic center: 1 red dot

Nature play – precedent images



NATURE PLAY AREA

NOTES ON BOARD:

- 1. Looks interesting.

APPENDIX C: INDIVIDUAL COMMENT BOARDS FROM OPEN HOUSE #3

Comment boards have been provided to show individual responses from Section IV

Parks District support

Central School District

City of Monmouth

City of Independence

Do you support the idea of a Parks District which would include the City of Independence, the City of Monmouth and the Central Schools District?

Please place a dot in the area of your preference:

Yes: 16 dots (10 yellow, 6 red)

No: 12 dots (10 yellow, 2 red)

A Parks District could be a joint district with the two cities and the school district. Given current limitations on funding and staffing resources, many of the future park and recreation goals of the two cities and district may only be possible through formation of and funding by this type of district. It also would represent a more efficient combined use of resources (money and staff) by the two communities. Improving the communities' recreational facilities and programs also is a way to improve residents' connections between Independence and Monmouth.

Parks, Trails, and Open Space System Master Plan: Consideration of a Parks District

CONSIDERATION OF PARKS DISTRICT

DOT TOTALS:

YES: 16 dots in support of a Parks District.

NO: 12 dots not in support of a Parks District.

Waterfront vision support and comments

Do you support the waterfront vision for the waterfront?

Please place a dot in the area of your preference (yes, I support or no, I do not support):

Yes, I support: 11 dots (10 red, 1 yellow)

No, I do not support: 0 dots

Do you have any additional comments on the waterfront vision for the waterfront?

Dock for float planes near downtown. Would shop + eat here.

Softball/baseball field in sports complex

How will these additions by the waterfront affect community events such as Western Days, Hops Harvest + Community Fest?

We love this plan for our community. Looking forward to playgrounds, interpretive signs, and other additions to the waterfront.

interpretive signs along W. River (trail)

Parks, Trails, and Open Space System Master Plan: Waterfront Park Vision

WATERFRONT VISION

DOT TOTALS:

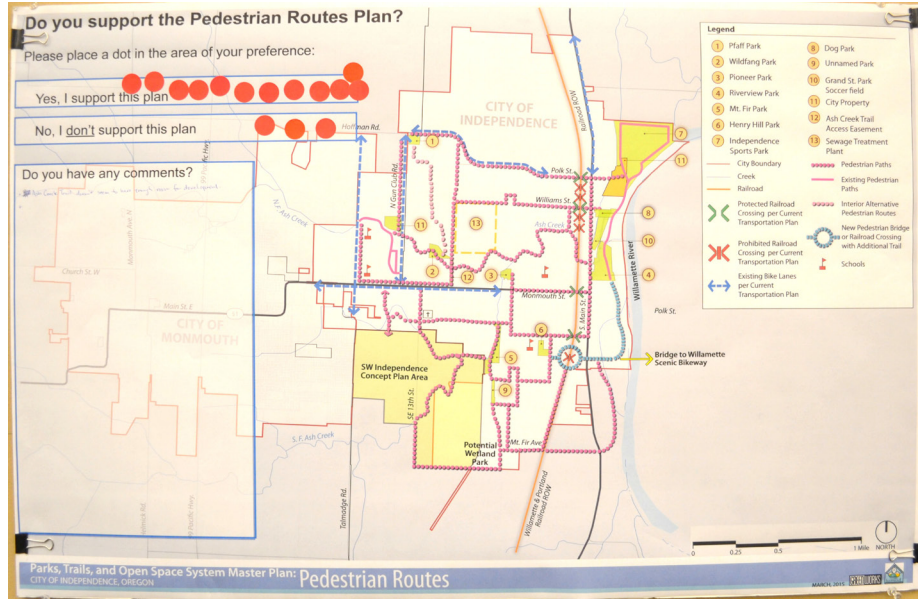
YES: 11 dots in support of the vision for the waterfront.

NO: 8 dots not in support of the vision for the waterfront.

COMMENTS:

1. Dock for float planes near downtown. Would shop and eat here.
2. Vegetation and ...?
3. ?
4. We love this plan for our community, looking forward to playgrounds for ...?
5. Interpretive signs along W. River (trail).
6. Softball/baseball field in sports complex.
7. How will these additions be the waterfront affect community events such as, Western Days, Hops Harvest and Community Fest?

Pedestrian routes plan support

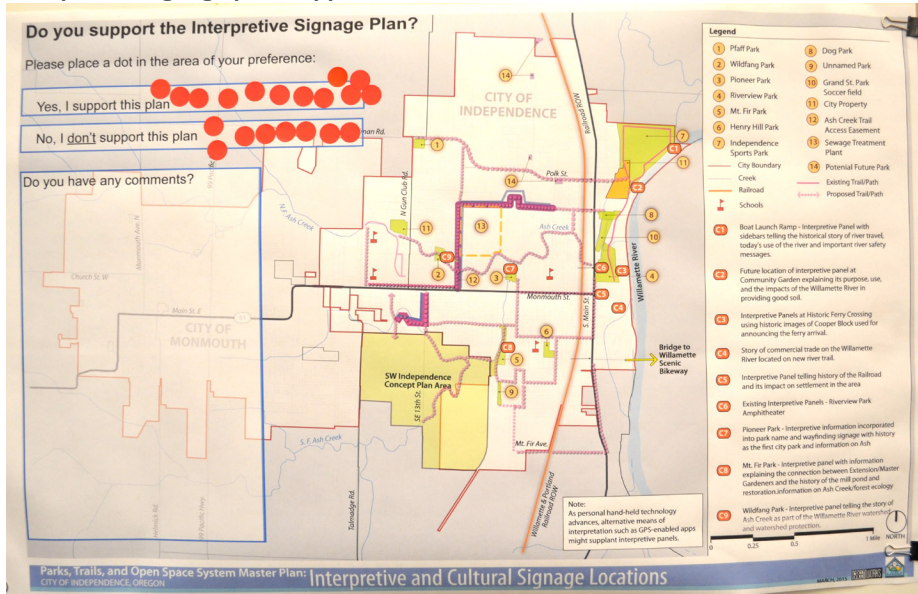


PEDESTRIAN ROUTES PLAN

DOT TOTALS:

YES: 12 dots in support of the proposed pedestrian routes plan.
NO: 3 dots not in support of the proposed pedestrian routes plan.

Interpretive signage plan support



INTERPRETIVE SIGNAGE PLAN

DOT TOTALS:

YES: 12 dots in support of the proposed interpretive signage plan.
NO: 8 dots not in support of the proposed interpretive signage plan.

Prioritizing trails/pedestrian connections

Mt. Fir and Ash Creek Trail have been identified as trail priorities for the parks system plan. Help us prioritize additional trails/pedestrian connections illustrated on the map below:

Place a dot in the number below each trail connection listed below indicating your priority for trails in the city parks system. 1 being the highest priority and 5 being the lowest priority.

River Trail	Mt. Fir Trail North/South	Central HS Connector Trail	North/South Connector Trail #1	North/South Connector Trail #2
1-5	1-5	1-5	1-5	1-5
2-5	1-5	1-5	1-5	1-5
3-5	1-5	1-5	1-5	1-5
4-5	1-5	1-5	1-5	1-5
5-5	1-5	1-5	1-5	1-5

PRIORITIZING TRAILS/PEDESTRIAN CONNECTIONS (1 HIGHEST PRIORITY AND 5 LOWEST PRIORITY)

DOT TOTALS:

River Trail: 1- 11 dots, 2- 2 dots, 3- 1 dot, 4- 2 dots, 5- 0 dots
 Mt. Fir Trail North/South: 1- 1 dot, 2- 2 dots, 3- 0 dot, 4- 0 dots, 5- 4 dots
 Central HS Connection Trail: 1- 2 dots, 2- 0 dots, 3- 0 dots, 4- 0 dots, 5- 5 dots
 North/South Connector Trail #1: 1- 4 dots, 2- 0 dots, 3- 1 dot, 4- 1 dot, 5- 4 dots
 North/South Connector Trail #2: 1- 5 dots, 2- 0 dots, 3- 2 dots, 4- 1 dot, 5- 3 dots

Prioritizing proposed park improvements

Please help us prioritize areas for the proposed park improvements. Place a dot in the number next to each map representing your priority for the city parks system. 1 being the highest priority and 8 being the lowest priority.

PRIORITIZING PROPOSED PARK IMPROVEMENTS (1 HIGHEST PRIORITY AND 5 LOWEST PRIORITY)

DOT TOTALS:

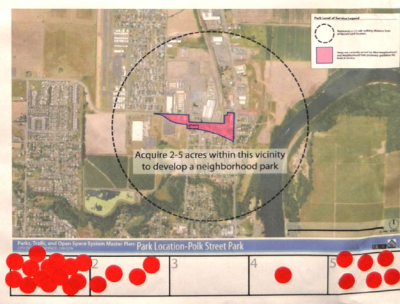
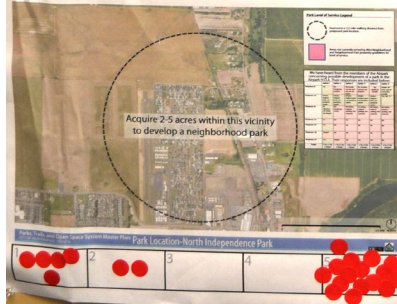
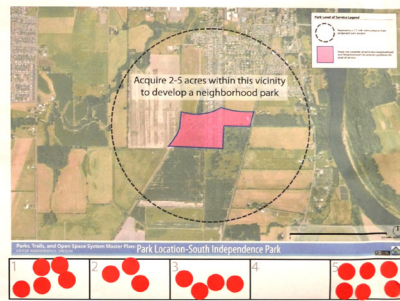
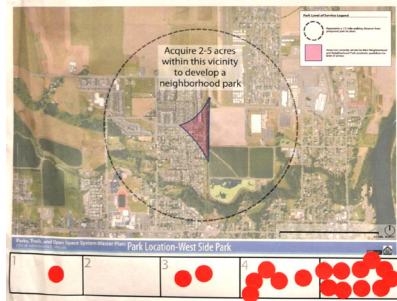
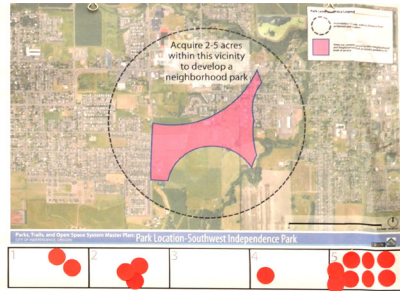
Pfaff Park: 1- 3 dots, 2- 1 dot, 3- 2 dot, 4- 2 dots, 5- 3 dots, 6- 0 dots, 7- 0 dots, 8- 0 dots
 Pioneer Park: 1- 1 dot, 2- 0 dots, 3- 0 dots, 4- 2 dots, 5- 0 dots, 6- 1 dot, 7- 1 dot, 8- 1 dot
 Henry Hill Park: 1- 1 dot, 2- 2 dots, 3- 3 dots, 4- 0 dots, 5- 1 dot, 6- 1 dot, 7- 1 dot, 8- 1 dot
 Unnamed Park: 1- 1 dot, 2- 0 dots, 3- 1 dot, 4- 0 dots, 5- 1 dot, 6- 1 dot, 7- 1 dot, 8- 1 dot
 Wildfang Park: 1- ? dots, 2- 0 dots, 3- 1 dot, 4- 0 dots, 5- 0 dots, 6- 0 dots, 7- 1 dot, 8- 3 dots
 Mt. Fir Park: 1- 4 dots, 2- 3 dots, 3- 1 dot, 4- 0 dots, 5- 0 dots, 6- 0 dots, 7- 0 dots, 8- 0 dots
 Independence Sports Park: 1- 9 dots, 2- 3 dots, 3- 0 dots, 4- 0 dots, 5- 0 dots, 6- 0 dots, 7- 1 dot, 8- 0 dots
 Polk Street Park: 1- 9 dots, 2- 1 dot, 3- 0 dots, 4- 0 dots, 5- 1 dot, 6- 0 dots, 7- 0 dots, 8- 2 dots

Further comments

Please help us prioritize areas for future park development.

Place a dot in the number next to each map representing your priority for the city parks system.

1 being the highest priority and 5 being the lowest priority.

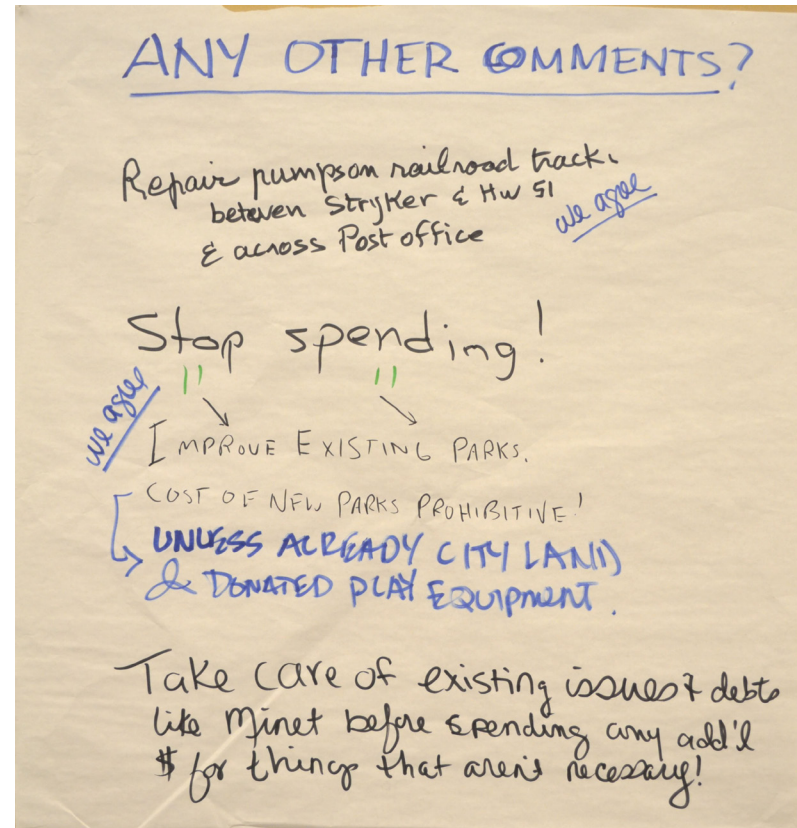


PRIORITIZE FUTURE PARK DEVELOPMENT

DOT TOTALS:

Southwest Independence Park: 1- 2 dots, 2- 3 dots, 3- 0 dots, 4- 1 dot, 5- 8 dots
 Westside Park: 1- 1 dot, 2- 0 dots, 3- 2 dots, 4- 5 dots, 5- 10 dots
 South Independence Park: 1- 5 dots, 2- 3 dots, 3- 4 dots, 4- 0 dots, 5- 6 dots
 North Independence Park: 1- 5 dots, 2- 2 dots, 3- 0 dots, 4- 0 dots, 5- 16 dots
 Polk Street Park: 1- 14 dots, 2- 4 dots, 3- 0 dots, 4- 1 dot, 5- 6 dots

Further comments



FURTHER COMMENTS

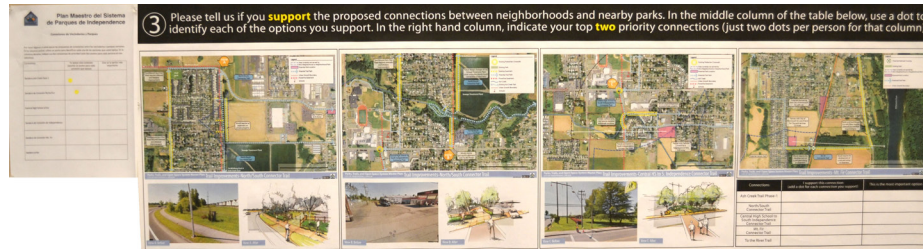
GENERAL WRITTEN COMMENTS PROVIDED:

1. Repair lumps on railroad track between stricker and HW 51 and across Post Office.
2. We agree.
3. Stop spending!
4. We agree.
5. Improve existing parks.
6. Cost of new parks prohibited.
7. Unless already city land and donated play equipment.
8. Take care of existing issues and debts like Minet before spending any add'l \$ for thing that aren't necessary.

APPENDIX D: LATINO COMMUNITY OUTREACH MEETING

Comment boards have been provided to show individual responses from Section IV

Conexiones de vecindarios y parques



CONEXIONES DE VECINDARIOS Y PARQUES

Yo apoyo esta conexión (apunte un punto para cada conexión que apoya)

1. Sendero Ash Creek Fase 1- 1 dot
2. Sendero de Conexión Norte/Sur- 1 dot

Deportes

Fuera de los siguientes, que dos tipos de campos o instalaciones deportivas son las más importantes para la residentes de la Independencia? Por favor marque sólo los **dos** que son los más importantes.

FUERA DE LOS SIGUIENTES, QUE DOS TIPOS DE CAMPOS O INSTALACIONES DEPORTIVAS SON LAS MAS IMPORTANTES PARA LA RESIDENTES DE LA INDEPENDENCIA? POR FAVOR MARQUE SOLO LOS DOS CREE QUE SON LOS MAS IMPORTANTES.

(Out of the following, which two types of sports fields or facilities are most important for the residents of Independence? Please place a dot next to the two sports activities you think are most important.)

DOTS ON BOARD:

1. Three (3) placed on Beisbol. (Baseball)
2. Three (3) placed on Futbol. (Soccer)
3. Two (2) placed on Baloncesto (Basketball)
4. Four (4) placed on Tenis (Tennis)
5. Four (4) placed on Golf del Disco (Disc Golf)
6. Four (4) placed on Lacrosse (Lacrosse)
7. Two (2) placed on Bocci Bola (Bocci Ball)

Actividades recreos

En su opinión, ¿cuáles deberían ser las prioridades de este Plan Maestro? Por favor, consulte las **tres** cosas que cree que son las más importantes de las imágenes a continuación.



CONEXIONES

La creación de conexiones entre parques y espacios individuales en toda la comunidad (sistema de senderos y vías interconectadas). Apoyó a caminar, correr y montar en bicicleta por los senderos y caminos.



RIO DE ACCESO

Facilitar el acceso a las oportunidades para la recreación en el río Willametta.



DEPORTES DE EQUIPO

Proporcionar oportunidades para participar en deportes como el fútbol, el béisbol, el baloncesto, el tenis.



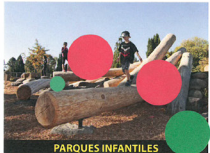
ÁREAS DE REUNION

La creación de oportunidades para la tierra a grupos de reuniones.



ESPACIOS NATURALES

El mantenimiento de las zonas naturales y espacios abiertos para la fauna y plantas salvajes.



PARQUES INFANTILES

Asegurar que los niños tengan la oportunidad de jugar en los parques y zonas de juego.



JARDINES

Permitir que la gente de campo o cultivar sus propios alimentos.



CONCIERTOS

La creación de oportunidades para asistir a conciertos o festivales.



TIRO CON ARCO

Participar en actividades de tiro con arco.

Otros, sírvase describir más abajo.

Parks, Trails, and Open Space System Master Plan: Actividades Recreas
FESTIVAL INFORMATIVO-CITY OF INDEPENDENCE, OREGON

September 30, 2014

EN SU OPINIÓN, ¿CUÁLES DEBERÍAN SER LAS PRIORIDADES DE ESTE PLAN MAESTRO? POR FAVOR, COLOQUE UN PUNTO AL LADO DE LAS TRES ACTIVIDADES QUE USTED CREE SON LAS MÁS IMPORTANTES DE LAS IMÁGENES A CONTINUACIÓN.

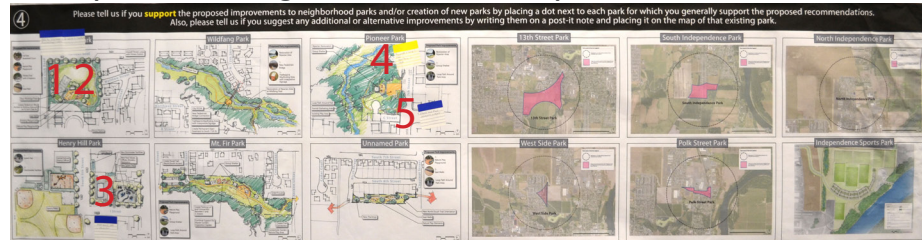
(In your opinion, what should the priorities be for this Master Plan?

Please place a dot next to the three activities you think are most important from the images below.)

DOTS ON BOARD:

1. Three (3) placed on Conexiones. (Connections)
2. Three (3) placed on Rio de Acceso. (River Access)
3. Two (2) placed on Deportes de Equipo (Team Sports)
4. Four (4) placed on Areas de Reunion (Reunion Areas)
5. Four (4) placed on Espacios Naturales (Natural Areas)
6. Four (4) placed on Parques Infantiles (Playgrounds)
7. Two (2) placed on Jardines (Gardens)
8. Four (4) placed on Conciertos (Concerts)
9. Four (4) placed on Tiro con Arco (Archery)

Park improvements and general location for new parks



PROPOSED PARK IMPROVEMENTS AND NEW PARK LOCATIONS

NOTES ON BOARD:

1. Yes to the full basketball court.
2. I want a Skate Park.
3. They should build a splash pad.
4. Playgrounds-swings and slides. Places/things for infants.
5. Make the playground bigger.